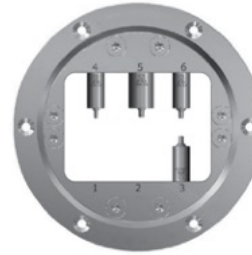
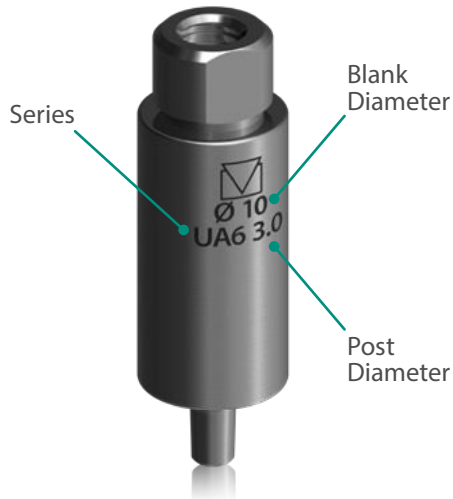




MILLABLE ABUTMENT BLANKS



*“Custom abutments with the quality and precision
of the Bicon locking taper connection.”*

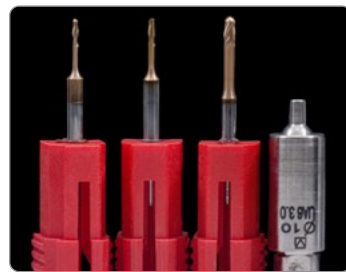


Highlights

Bicon's Millable Abutment Blanks provide for custom abutments while assuring the quality and precision of the Bicon locking taper connection.

- Increase your efficiency
- Design and mill your own custom Bicon abutments with optimal gingival contours
- Ensure maximum titanium contact with the gingival sulcus, especially for less than ideally positioned implants

Material: Ti6Al4V-ELI



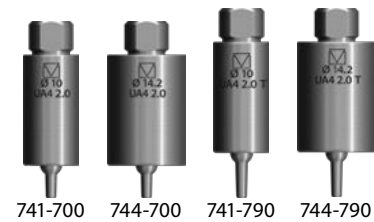
Milling Guidelines*

Milling	RPM	Bur Ø
Wet	19,000	2.5mm
Wet	30,000	1.0mm
Wet	35,000	0.8mm

*Based on VHF Milling Machines N4 and R5

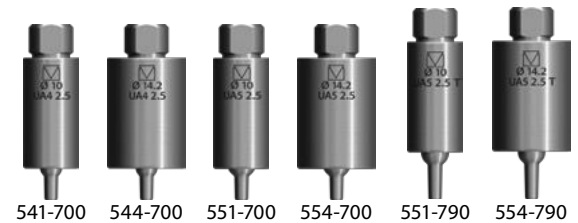
2.0mm Post

Part No.	Diameter	Series	Shaft
741-700	10mm	UA4	Standard
744-700	14.2mm	UA4	Standard
741-790	10mm	UA4	Tall*
744-790	14.2mm	UA4	Tall*



2.5mm Post

Part No.	Diameter	Series	Shaft
541-700	10mm	UA4	Standard
544-700	14.2mm	UA4	Standard
551-700	10mm	UA5	Standard
554-700	14.2mm	UA5	Standard
551-790	10mm	UA5	Tall*
554-790	14.2mm	UA5	Tall*



3.0mm Post

Part No.	Diameter	Series	Shaft
651-700	10mm	UA5	Standard
654-700	14.2mm	UA5	Standard
661-700	10mm	UA6	Standard
664-700	14.2mm	UA6	Standard
651-790	10mm	UA5	Tall*
654-790	14.2mm	UA5	Tall*

